



WELCOME!

We want to make sure you enjoy your time and have everything you need to make your participation a success during 2 Days of Cultural Accessibility, presented by VSA Ohio and many statewide partners.

This document contains information and resources about accessibility and hospitality while you are in Columbus and attending the events. Don't hesitate to be in touch if you have any other questions or needs not addressed here.



VSA Ohio
614-241-5325
info@vsao.org
www.vsao.org

IMPORTANT DATES

Tuesday September 13	Tuesday September 20	Wednesday September 21
Deadline to Register	8:00am – 4:30pm 2016 Arts & Autism Conference: Creating, Learning, Living	8:00am – 4:30pm Building Access by Design 2.0
Deadline to request professional access accommodations	6:30pm ReelAbilities Film Festival Columbus Screening & Reception	





WELCOME!

REGISTRATION

- www.vsao.org/artsautismohio
- www.vsao.org/culturalaccess

The Columbus Museum of Art system is not screen-reader accessible;

To pay with a Purchase Order or Check or Cash;

- Contact VSA Ohio at 614-241-5325 for either of these options.

OUR PHILOSOPHY

VSA Ohio and our partners...

- approach accessibility from a **customer service and civil rights perspective**.
- create a “**safe space**” where attendees should feel comfortable to ask questions and/or disclose less-than-ideal situations in order to get the best guidance on how to make improvements.
- are **positive** with a focus on problem-solving and developing solutions.
- model or create a **supportive environment** that recognizes and respects different approaches, ideas, and opinions.

OUR AUDIENCE

- **works for all types of organizations** – performing arts centers, museums, theaters, state arts agencies, parks, zoos, arenas, service providers, schools, etc.;
- have **varying degrees of experience** with accessibility – from 2 days to 20+ years;
- have a **variety of different job responsibilities** – education director, theater manager, curator, box office manager, volunteer coordinator, facilities or production staff, teacher, therapist, etc.;
- are looking for **practical information** – tips, tools, and information they can easily adapt for their own communities and organizations;
- love to learn how to connect with **resources in their own communities**; and,
- want to **participate actively** in the sessions.





WELCOME!

ACCESSIBILITY

*Contact VSA Ohio by Tuesday, September 13 to schedule professional access accommodation services such as ASL or CART.

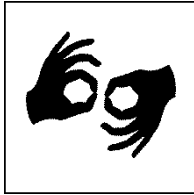
***Stop by the Information Desk** during either conference to speak with staff about any other accommodations you may need or missed during the registration process.



Columbus Museum of Art is wheelchair accessible.
Gateway Film Center is wheelchair accessible.



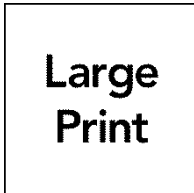
Audio Description is available for all ReelAbilities Films screened at Columbus Museum of Art and Gateway Film Center. *Stop at the Information Desk for a receiver.



Request ASL by Tuesday, September 13; 614.241.5325.



ReelAbilities films include Open Captions.



Event programs will be printed using font sizes of 10+.
A small number of font size 18+ programs will be available.



For guests with low vision, volunteers will be on hand for way-finding.
Contact VSAO in advance to get digital materials.





WELCOME!



The Columbus Museum of Art and Gateway Film Center do have assistive listening devices. Contact VSAO in advance to reserve your unit or check the Information Table when you arrive.



Sensory-Friendly

A quiet space is reserved at the Columbus Museum of Art in the bridal room; find it on the map. Prepare for your visit with the Columbus Museum of Art's Social Story.



Please avoid wearing perfume, cologne, and other fragrances, and use unscented personal care products in order to provide a fragrance-free environment.



Food allergies and sensitivities should be noted during the registration process.

VISIT PREPARATION

Attendees are welcome to preview event spaces to increase their comfort and ease of navigation on conference days.

- The Columbus Museum of Art is always FREE on Sundays. Visit during their regular hours, 10a – 5p.
- The Columbus Museum of Art is preparing a new **social story** for visitors who are new to the museum. It will be posted on the Facebook Event page when it is ready.
- The Gateway Film Center is open seven days a week with films and events. The public can visit the theater, dine at their restaurant, and take a look around during regular hours, approximately 9a – 11p.





WELCOME!

SPREAD THE WORD

Help make this conference a success and promote your own participation.

#artsautismohio #culturalaccess



Both conferences have event pages on Facebook. Search for [2016 Arts & Autism Conference](#) and/or [Building Access by Design 2.0](#), join, and get regular updates. Find and Like Event Presenters & Partners!



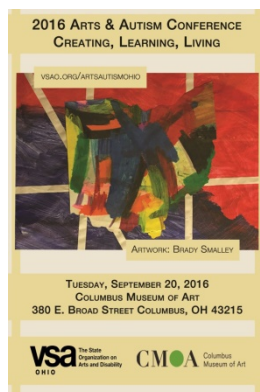
[@VSAOhio](#)
[@columbusmuseum](#)
[@DisabilityRtsOH](#)
[@ReelAbilitiesUS](#)



[@columbusmuseum](#)

Postcards

Available for your records or sharing with your networks. Contact VSA Ohio for extra copies.





WELCOME!

EVENT LOCATIONS

Columbus Museum of Art

480 E. Broad Street
Columbus, OH 43215
www.columbusmuseum.org



Parking is free and available in the lots directly north of the building. Check signs and do not park in Columbus College of Art and Design or other property lots.

Parking Meters are also available along neighboring streets; check time restrictions and note max time is general three hours.

Bus to the Museum with COTA; [map your ride on www.cota.com](http://www.cota.com). The #10 bus runs east and west along Broad Street. Connections from other major lines are likely to connect at High & Broad Street (to the west, about 15 minutes walking).

The **ReelAbilities Film Screening** will take place at:

Gateway Film Center

1550 N. High Street
Columbus, OH 43201
www.gatewayfilmcenter.org



The Gateway is located in the **South Campus Gateway**, across the street from The Ohio State University. Find it off High Street, between 9th and 10th streets.

Parking is available in a garage, accessible off 10th street. Bring your ticket in for a \$2 validation. Parking meters and free street parking is available nearby.

Bus to the Gateway with COTA. Many major lines including the #2 run up and down High Street.

Bike to the Gateway and use the racks throughout South Campus Gateway.





WELCOME!



AREA LODGING

[Red Roof Plus Downtown](#) (0.9 mi from Museum)
Average \$99 per night; accessible Rooms; 614.224.6539

[Drury Inn & Suites, Columbus Convention Center](#) (14 min. walk to Museum)
Average \$160 per night; accessible Rooms; 1-800-491-6126

[Residence Inn Columbus Downtown](#) (1.2 mi from Museum)
Average \$200 per night; accessible Rooms; Pets allowed; 614.222.2610

[Renaissance Columbus Downtown](#) (13 min. walk to Museum)
Average \$269 per night; accessible Rooms; 614.228.5050

[Air B&B](#) – stay where you want!

AREA TRANSPORTATION

- [COTA](#) – Columbus public bus service; map your ride online
- **COTA Paratransit Mobility Services**; call 614.275.5828
- [COTA AirConnect](#) offers direct bus service connecting the Columbus Airport (CMH) with downtown for \$2.75.
- [CBUS](#) is the city's free downtown circulator, running every 10-15 minutes, 7-days a week. Check the website for details and maps.
- [Car2Go](#) ride share program available in Columbus, with access to the airport. Membership is required.
- **Uber** car service is available in central Ohio; download the app.

AREA ACTIVITIES

Make the most out of your time in central Ohio.
www.ExperienceColumbus.com is your gateway and resource guide to all things Columbus.





WELCOME!



2016 Arts & Autism Conference: Creating, Learning, Living

Building Access by Design 2.0

ReelAbilities Film Festival Columbus

PARTNERS



SPONSORS



Greater Columbus Arts Council

